

**Tillbridge Solar Project
EN010142**

**Volume 6
Environmental Statement**

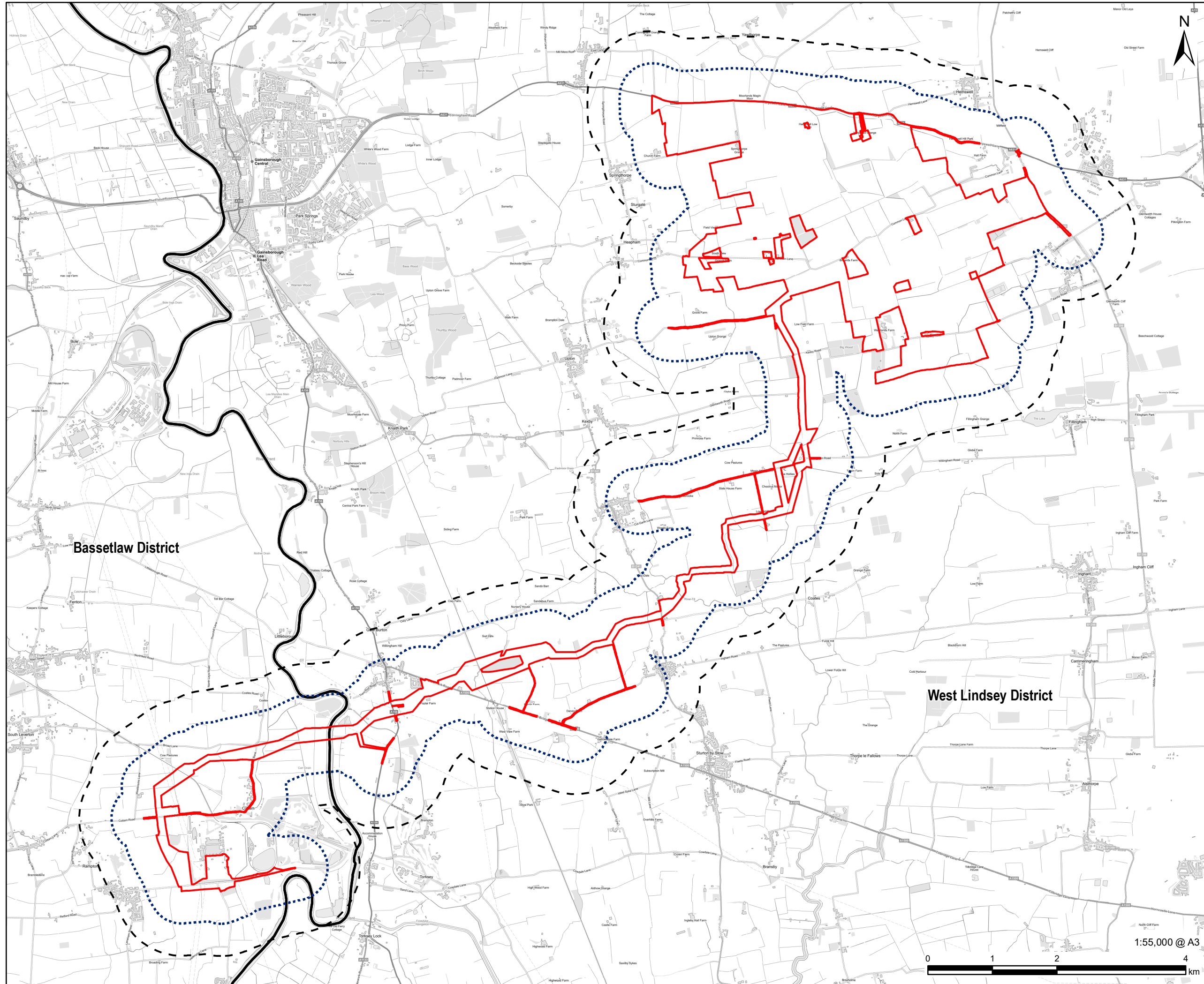
**Figure 14-2: Study Area for Socio-Economics and
Land Use Effects**

Document Reference: EN010142/APP/6.3

**Regulation 5(2)(a)
Infrastructure Planning (Applications: Prescribed Forms and
Procedure) Regulations 2009**

**April 2024
Revision Number: 00**

tillbridgesolar.com



AECOM

PROJECT
Tillbridge Solar Project

CLIENT
Tillbridge Solar Ltd

CONSULTANT
Aldgate Tower
2, Leman Street
London, E1 8FA
United Kingdom
T +44-0207-645-2000

LEGEND

- Order limits
- 500m Study Area
- 1km Study Area
- District Boundary

Bassetlaw District

West Lindsey District

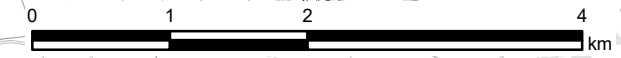
NOTES
Contains Ordnance Survey Data © Crown Copyright and database right 2024.
© Crown copyright and database rights 2024.
Ordnance Survey 0100031673.

ISSUE PURPOSE
DCO Submission
PROJECT NUMBER
60677969

FIGURE TITLE
Study Area for Socio-economics and Land Use Effects

FIGURE NUMBER
Figure 14-2

1:55,000 @ A3



The drawing has been prepared for the use of AECOM's client. It may not be used, modified, reproduced or relied upon by third parties, except as agreed by AECOM or as required by law. AECOM accepts no responsibility, and denies any liability whatsoever, to any party that uses or relies on this drawing without AECOM's express written consent. Do not scale this document. All measurements must be obtained from the stated dimensions.